

# Lucky Wi-Fi Pocket WiFi 303ZT



Only for Domestic

- ◆Wi-Fi  
a/b/g/n/ac
- ◆Communication Speed  
Down Max 187.5Mbps  
Up Max 37.5Mbps
- ◆Battery hours  
approximately 9 hours
- ◆Number of concurrent devices  
Max 14 devices

## ◆Contact

**Phone Number : 03-6812-1288** (Weekday 10am-6pm)  
e-mail : [info@luckywifi.net](mailto:info@luckywifi.net)

\*Customer is responsible for the charge for a telephone call.  
\*Before contact us, please read "trouble shooting" on the reverse side.

## ◆Return Address

**Terralink Inc.**  
Meisho MG building 8F, 1-47-1 Higashi Ikebukuro,  
Toshima-ku, Tokyo, 170-0013, Japan

## ◆Extend Rental period

- You can apply online with Rental Extension to extend your rental period.
- We apologize for not being able to comply with your extension request over the phone.

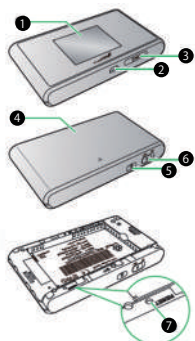


## ◆Power on / off

- Power on
  - Power off
  - 1 Slide to on
  - 1 Slide to off
  - 2 Flick up  
"OK" appears.
  - 3 Tap "OK"  
Home screen appears.
- \*When lock screen appears, tap the lock icon.  
Screen is unlocked and Home screen appears.



## ◆Parts and Functions



- 1 Display
- 2 External Device Port  
Connect Micro USB Cable and AC charger (optional accessory)
- 3 USIM Card Tray
- 4 Battery cover
- 5 Lock Button  
Turn Display on / off
- 6 Power Switch  
Power on / off
- 7 Reset Button  
Press five seconds or more with a pointed object to reset settings to defaults.

## ◆Touchscreen Operations

### ■How to use Touchscreen

WiFi router Display is a touch screen. Tap and flick to operate it.

### Tap

Tap item or key to open or execute function operation.



### Flick

Flick to toggle sheets, pages, etc.



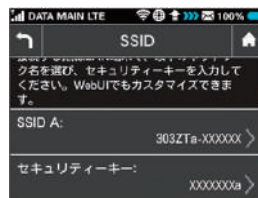
## ◆SSID and Security Key

### 1 Tap SSID

Introduction appears.

### 2 Flick up

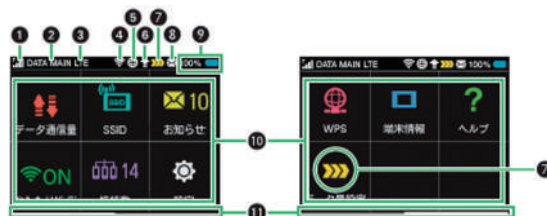
SSID and Security key appears.



※Two SSID are set to Wi-Fi router. Respective WPA Security keys for SSID A and B are in Wi-Fi router at the time of purchase.

- Remove Battery from Wi-Fi router to check default SSID and the security key.
- If Wi-Fi router's SSID is changed, new SSID and Security key are shown.
- SSID B is not available at the time of purchase.

## ◆Home screen



### 1 Levels of mobile networks connected

- Strong
- Weak
- No Service
- Roaming

### 2 Network operator name

DATA MAIN / DATA SUB

### 3 Network name

4G / LTE / 3G

### 4 Levels of Internet Wi-Fi connected

- Strong
- Weak

### 5 Status of Internet connected

- Connected
- Not connected

### 6 Software update notification



### 7 Limitation

- Advance notice of communication speed slowdown
- Start of communication speed slowdown
- Release of communication speed slowdown

### 8 Unread notification

### 9 Battery

- Battery charged
- Battery low
- Battery almost empty
- Charging

### 10 Touch menu icons

Touch menu icons for various functions

### 11 Page indicator

Indicators which Home screen page you are in

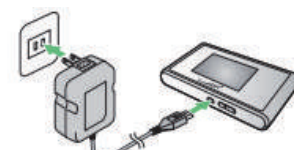
## ◆Charging

### ■Micro USB cable



Insert Micro USB cable ( Micro USB plug ) into External Device Port and Micro USB Cable to a PC.

### ■AC charger



Insert AC charger Micro USB plug into External Device Port and power plug to AC outlet.

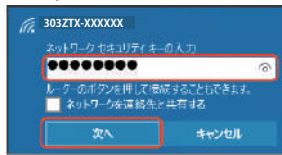
## ◆Connecting with WLAN (for Windows 10)

\*For security key, please read"SSID and password."

- 1 Activate PC WLAN function
- 2 In task tray click, "Network settings" appears.
- 3 Select Wi-Fi name (303ZTX-XXXXXX)→click "Connect"



- 4 Enter password → "NEXT"



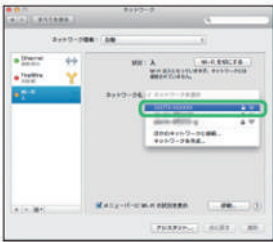
\*WLAN connection counter number on Display increases by one.

- 5 Checking WLAN connected

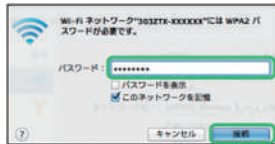
## ◆Connecting with WLAN Mac

This section describes setup operations with screenshots and steps for WPA security setting.

- 1 In Apple menu "System preferences" →"Network"
- 2 Select "Wi-Fi"→"Turn Wi-Fi On"
- 3 In "Network Name" pulldown list, select SSID (303ZTX-XXXXXX)



- 4 Enter Security key correctly. →Click "Remember this network" →"Join"



When connection is established, WLAN connection counter number on Display increases by one.

\*If a message "Can't detect preferred Network" appears, take off the check mark "Confirm before connecting to new network."

## ◆Connecting Android devices

- 1 Activate Android device In menu, "Setting"→"Wi-Fi"
  - 2 Turn on Wi-Fi
  - 3 Tap Wi-Fi router's SSID (303ZTX-XXXXXX)
  - 4 Enter Security key in "password" correctly
- \*Operation steps vary by Android device. For details, refer to Android device user guide.

## ◆Trouble shooting

\*Please confirm before inquiry.

- Wi-Fi router is not working Please turn-off and wait a while then turning again.

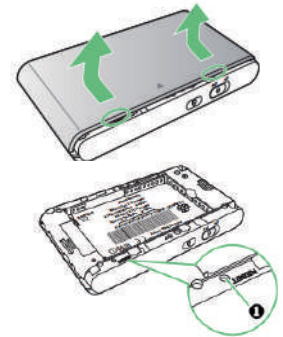
- Unable to connect Internet Wi-Fi

1. Please be sure Wi-Fi function is turned on.
2. Please be sure, you enterd password correctly.

\*If problem persists, reset Wi-Fi router.

◇How to Reset Wi-Fi router

1. Press where circled ○ (beveled surface) to slide as marked ▲ on Cover, and lift it up to remove it.
2. Press five seconds or move with a pointed object to reset settings to defaults.



- Internet connection fails

If signal reception is poor or fails, move to where signal is strong, then reconnect. Also, please restart the router and connecting devices.

## ◆Connecting iOS devices

This section describes setup operations with screenshots and steps for WPA security setting on Android 4.4.

- 1 Activate iOS device "Setting"→"Wi-Fi"
- 2 Tap "Wi-Fi" icon→Activate
- 3 Tap SSID (303ZTX-XXXXXX)



- 4 Enter Security key correctly→"Join"



When connection is established, WLAN connection counter number on Display increases by one.